



The RJ-PW-ex Series of Pan Washers

Features

- 10 min Cycle Time
- 2000L Conical Storage Tank
- Chemical Filtration
- Flash Drying Stage Inc.
- Internal & External Wash

Cleaning Agents

- Alkaline Detergent
- Butyl Glycol
- Dibasic Esters
- Flammable solvents
- Alternative "Green" Solvents

Rotajet Systems Ltd.
14 Flanshaw Way
Wakefield
West Yorkshire
WF2 9LP



Pan washers - RJ-PW-ex Series

The RJ-PW-ex Pan washer series are used worldwide for the reconditioning of mixing vessels. Typical users of this machine are manufacturers of surface coatings such as paints, inks and dyes. As standard these machines are produced with three stages – wash, rinse and dry. Due to the build up of solvent fumes all machines in the RJ-PW-ex series are ATEX certified, ensuring the safety of your operators.

Once loaded into position, the safety interlocks are engaged and the cycle commences. In normal operations an alkaline detergent is heated to between 65 and 70°C. In certain instances such as the removal of butyl glycols, dibasic esters can be used to increase the machines cleaning performance. Once the wash cycle has been completed the vessel is rinsed and then flash dried.

The washing media is subsequently filtered and re-circulated for reuse and stored in tanks at the rear of the machine.

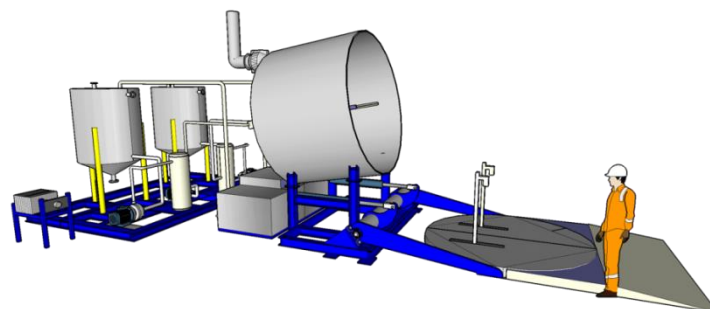
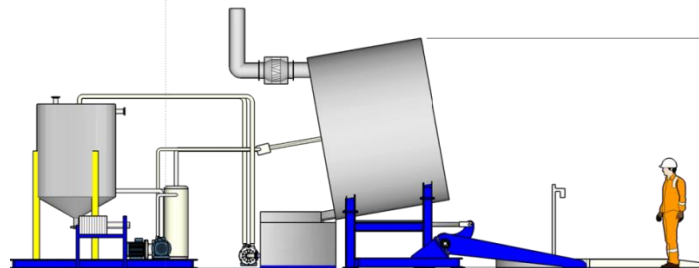
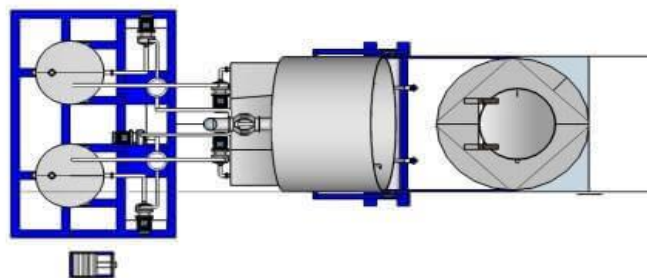
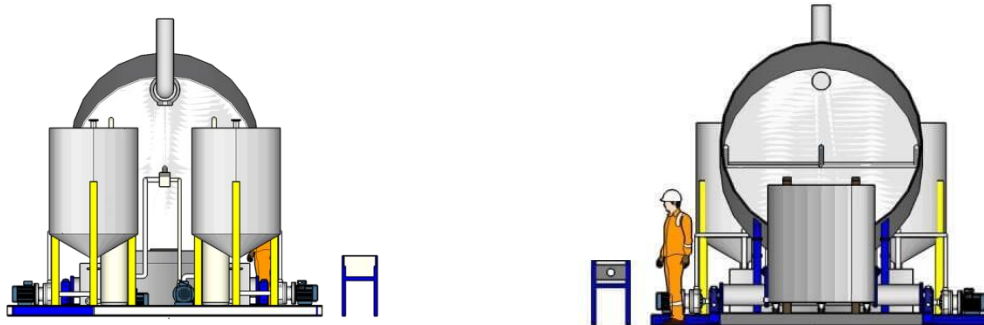


Fig. 1: Rotary Washer Series RJ-PW-ex



Fig. 2: Rotary Washer Series RJ-PW-ex

	RJ-PW-1200	RJ-PW-1500
Batch Size	1	1
Cycle Time (min)	10	10
Vessel Diameter (mm)	1200	1500
Throughput Rate		
Per Hour	6	6
Per Day	48	48
Cleaning Solutions		
Alkaline Detergent	✓	✓
Butyl Glycol	✓	✓
Dibasic Esters	✓	✓
Flammable solvents	✓	✓
“Green” Solvents	✓	✓



Our Products Range

- Plastic Washers
- Plastic Dryers
- Sink Float Tanks
- Granulators
- Shredders
- Feed Hoppers
- Conveying systems



Rotajet Systems Ltd.

14 Flanshaw Way
Wakefield
West Yorkshire
WF2 9LP
United Kingdom
(+44)1924 271446
Email: info@rotajet.co.uk
www.plasticwashing.co.uk